



E&V ID W-047EOH

IBIZA - JESUS

Renovation project with approved licenses

TOTAL SURFACE

approx. 232 m²

NUMBER OF BEDROOMS

4

PLOT SURFACE

approx. 450 m²

ASKING PRICE

€1,300,000



Property Details

Total Surface
approx. 232 m²

Asking price
€1,300,000

Total Number of Bathrooms
3

Plot Surface
approx. 450 m²

Views
Green View, Water View

Flooring
Tiles

Number of Bedrooms
4

Fireplace
✓

Garden
✓

Commission Text

Availability upon agreement.
Engel & Völkers does not accept responsibility as the information provided in this brochure is for information only and it is subject to errors, omissions, change of price or withdrawal without notice.

Taxes, notary and registry fees must be paid by purchaser, the commission to E&V paid by the seller as stipulated by Spanish regulations.



Property Description

This exceptional renovation project offers a unique opportunity to create your dream home in a quiet, yet central location. The existing property, comprising a 90 m² residence with three bedrooms and two bathrooms, is poised for expansion and enhancement. The project includes an extension of approximately 142 m², incorporating the construction of a pool and an outdoor area. The envisioned design seamlessly integrates indoor and outdoor living, creating a harmonious balance between relaxation and entertainment. For the ground floor, is an open-plan living room with

integrated kitchen planned as well as three guest bedrooms, and two bathrooms. A staircase leads to the upper floor, where the master suite will be, featuring an en-suite bathroom and walk-in closet. The master suite offers a private terrace with breathtaking views of the sea and old town. With approved building licenses and a central, yet tranquil location, this project offers the opportunity to create a unique home that combines comfort, elegance, and functionality.



Location Description

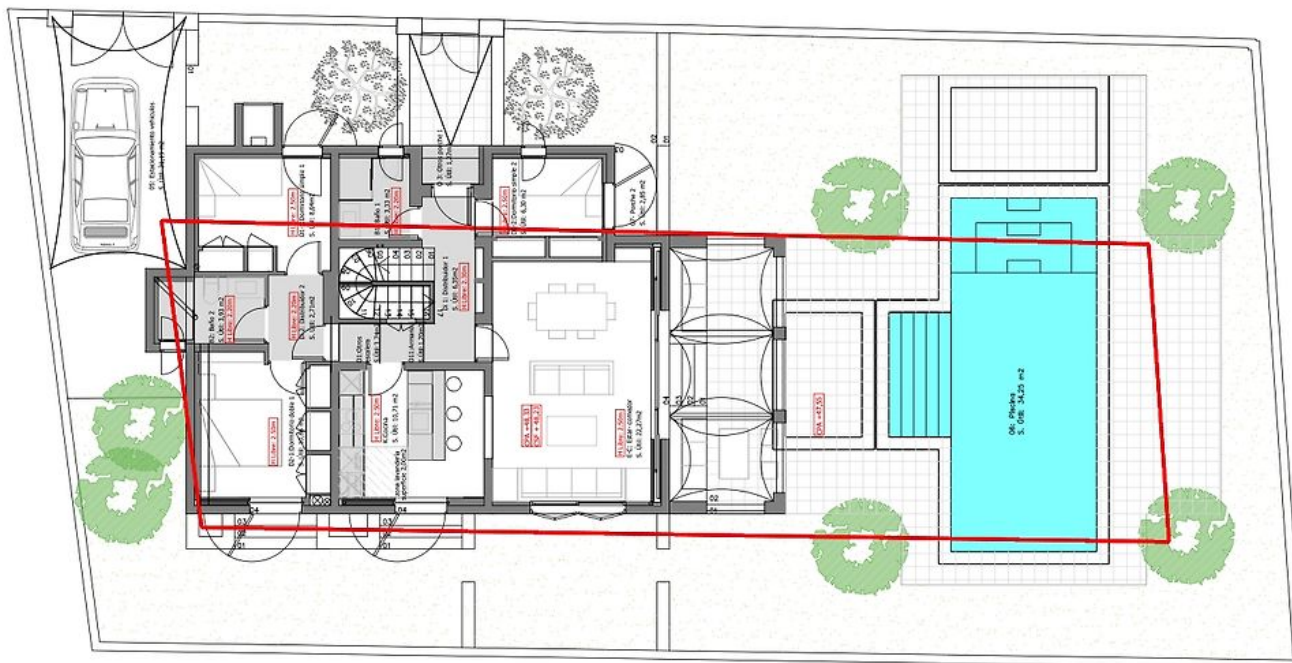
This property is situated just above the charming village of Jesús. The property's location offers the perfect blend of tranquility and accessibility, with Jesús and Ibiza Town reachable within a short drive. Jesús village provides all the necessary services, including supermarkets and a diverse range of restaurants. The international airport is just a 15-minute drive away, making travel convenient. One of the highlights of this location is the ability to walk to Jesús village

and Talamanca Beach. Other popular beaches, such as Ses Salinas and Cala Jondal, are within a 15-minute drive. For those who enjoy yachting or waterfront dining, the luxury Botafoch marina is a mere 3-minute drive away. This prime location offers the ultimate Ibiza lifestyle, combining peace and relaxation with easy access to amenities, beaches, and the vibrant town life.



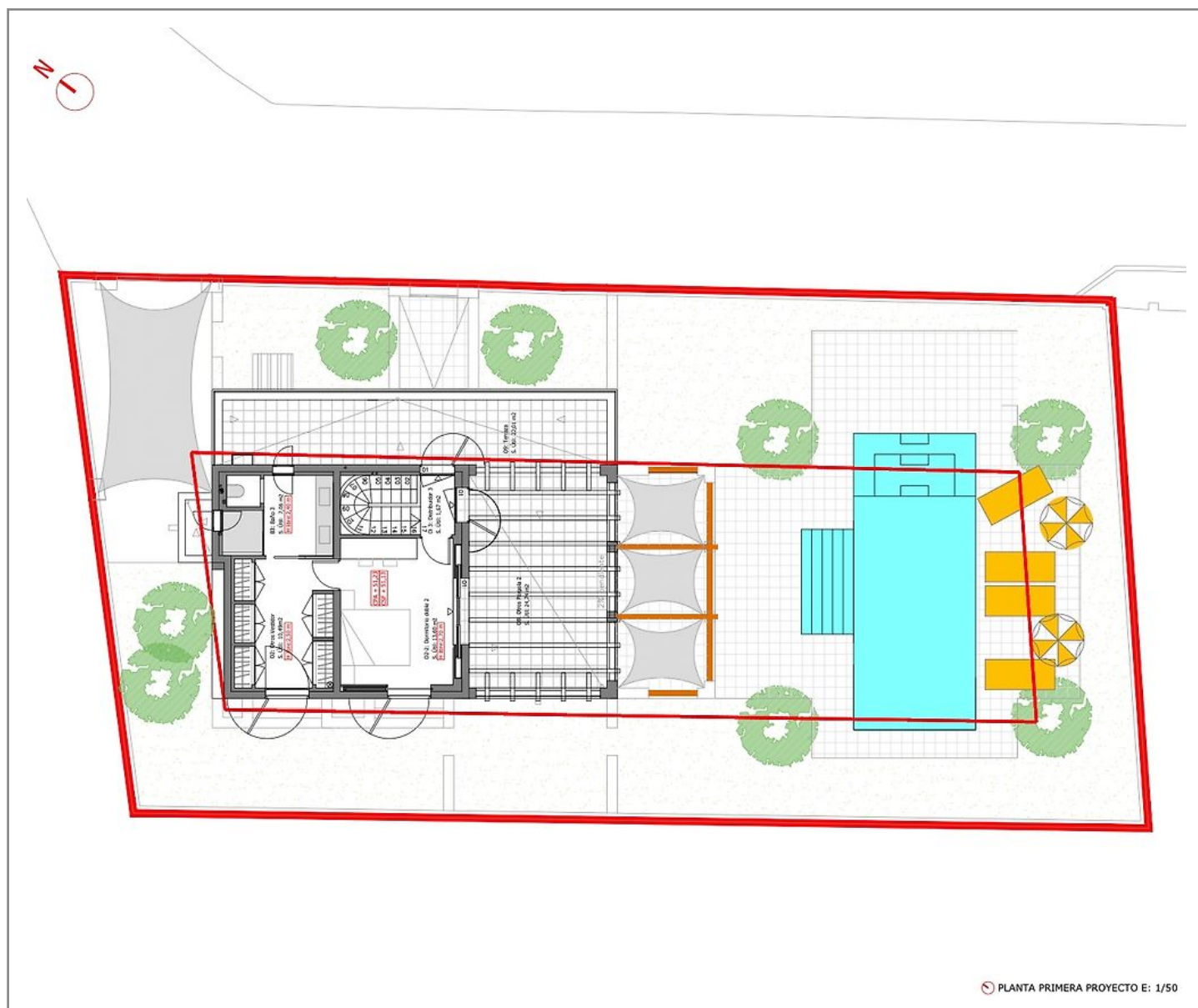




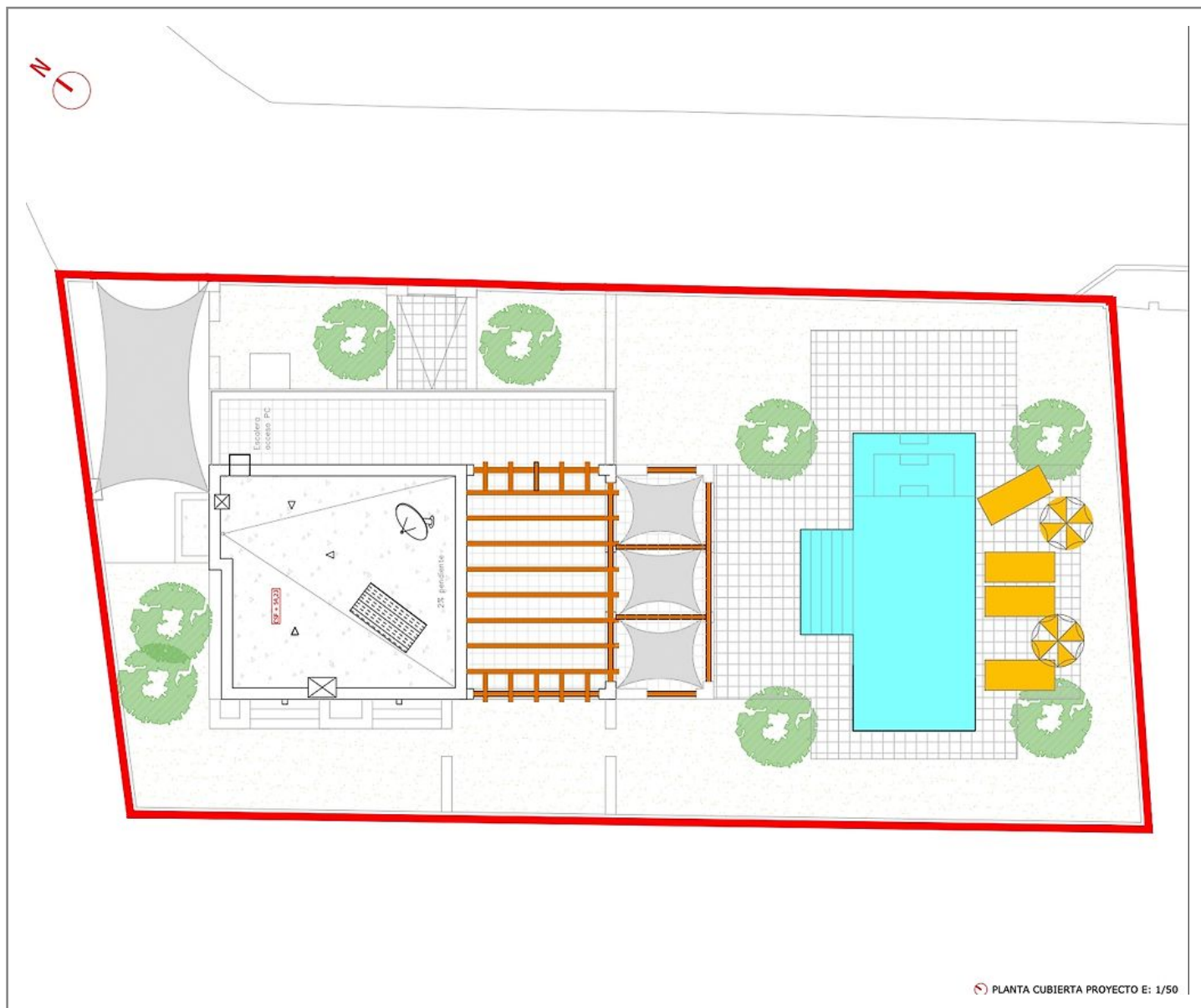


PLANTA BAJA PROYECTO E: 1/50

Floor Plan



Floor Plan



Floor Plan

Important Notice

In compliance with the current Personal Data Protection Law, we inform you that your personal data were included in an automated file owned by Engel & Völkers Ibiza, S.L., with CIF B57138182 and fiscal address at Avda. Santa Eulalia, 17 bajos, 07800 Ibiza, Spain, to attend to the commitments derived from the relationship between the two parties. Engel & Völkers Ibiza, S.L. informs that all data will be handled lawfully, loyally transparently, appropriately, suitably, with restrictions, precisely and kept up to date. You may exercise your right to access, rectify, limit treatment, suppress, withdraw and oppose to your personal data treatment, as well as the consent provided for its treatment by sending your request by email to Ibiza@engelvoelkers.com.

